



**TracElite – enabling traceability and compliance  
with asset optimization**

***TracElite – traçabilité, visibilité et conformité***

*www.TracElite.com*

TracElite is backed by major European retailers – to monitor compliance and manage risk in their supply chains

- **B&Q** (UK)
- **Castorama** (France)
- **Dänisches Bettenlager GmbH & Co. KG** (Germany)
- **E.LECLERC** (France)
- **Furniture Global Company** (Vietnam)
- **GALEC** (France)
- **GP Décors** (France)
- **Habitat** (UK)
- **ILVA** (Denmark)
- **Interproduct** (France)
- **Jysk Denmark, Jysk Finland, Jysk Norway, Jysk Sweden**
- **Kingfisher plc**
- **Kwantum** (Belgium), **Kwantum\*** (Netherlands)
- **LWO Corporation** (USA)
- **Marks & Spencer plc** (UK)
- **Perak Integrated Timber Complex** (PITC, Malaysia)
- **PT Excelsior Furnitama** (Indonesia)
- **Robert Dyas Ltd** (United Kingdom)
- **SIPLEC** (France)
- **The Warehouse** (New Zealand)
- **Tropisch Hout Nederland** (Netherlands)

**TracElite** – *always-on* is a rules-based monitoring and reporting system delivering traceability, automated chain of custody monitoring, remote audit and verification.

TracElite provides:

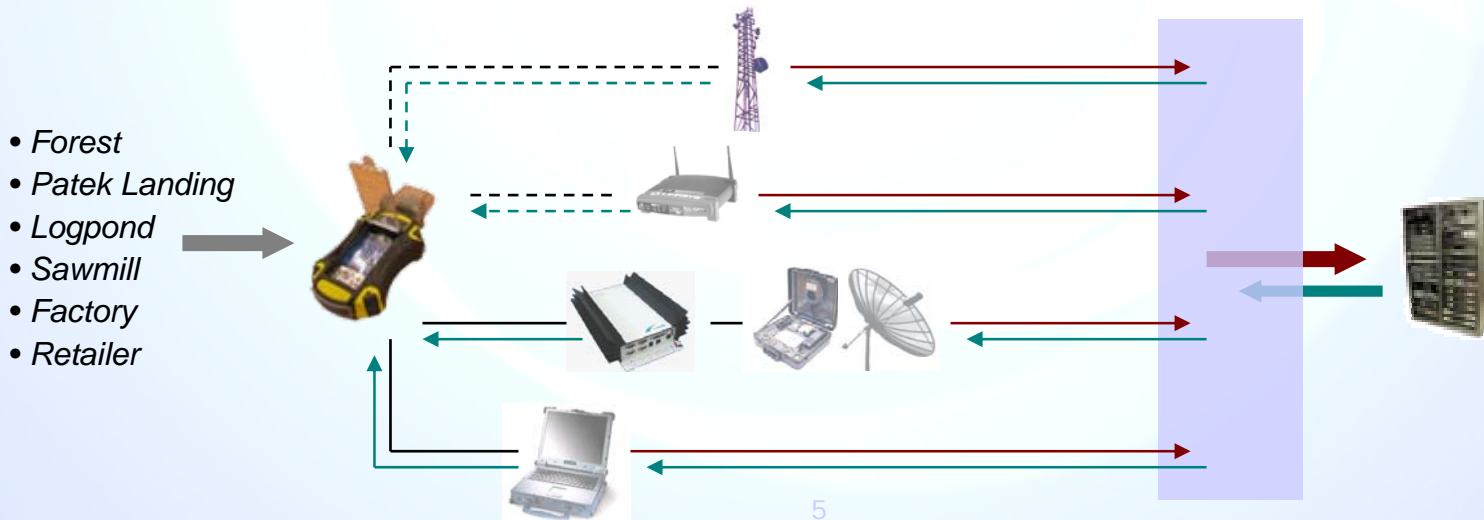
- **Traceability** – through control point data acquisition
- **Transparency** – Stakeholder reporting across the Web
- **Auditability** – through issues response and intervention tracking
- **Prediction & Prevention** – compliance checking within certification frameworks
- **Comparability** – asset/supplier views across supply chain
- **Sustainability** – supporting goals of reduced impact forestry
- **Competitiveness** – continuous reduction and elimination of non-compliances = 80/20 identification and business optimization

TracElite allows:

- ❑ **Effective, near real-time COC** through flexible data capture of timber movement between forest, sawmill and factory – to retailer
- ❑ **WOC enforcement** through tag-based tracking of timber entry into the supply chain – and back-to-stump traceability
- ❑ **Automated auditing** – CIS prediction technology provides automated detection and notification of actual and predicted non-compliances
- ❑ **Independent third-party scrutiny** – provide third parties with easy, rapid web-based access to the entire supply chain monitoring and auditing system
- ❑ **Supplier, retailer and stakeholder reporting** – reporting tools to allow all members of the supply chain to improve and optimize operations

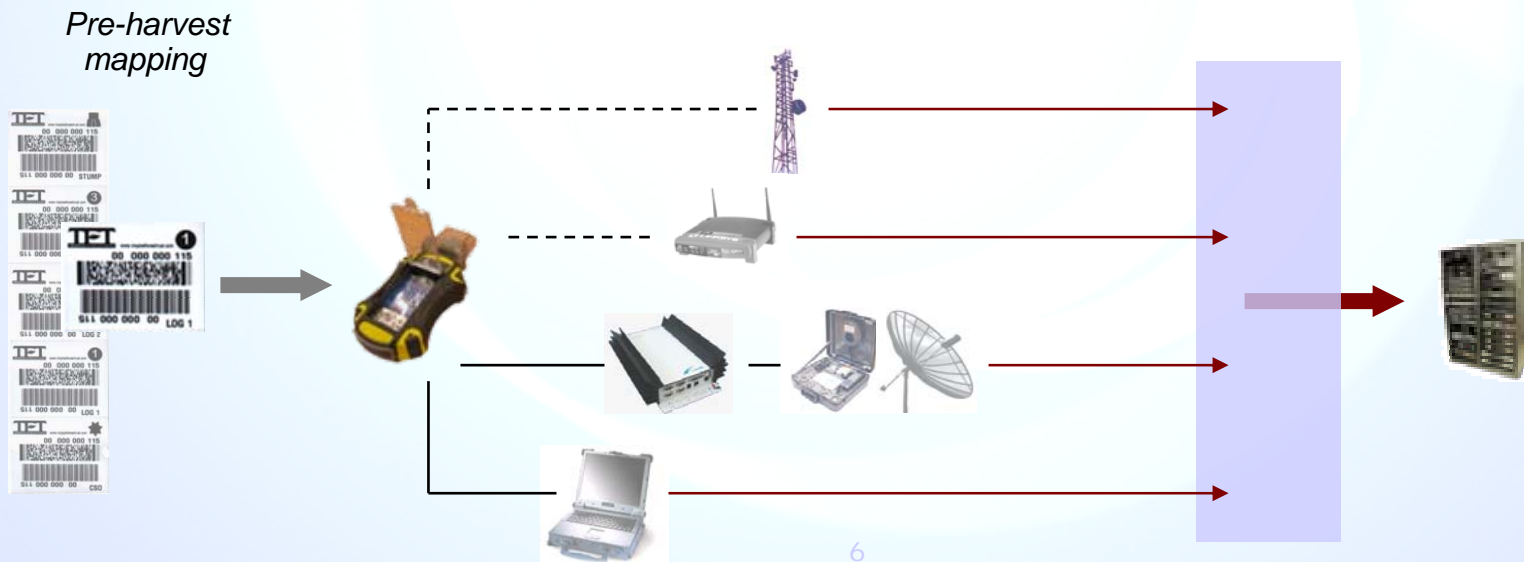
## Effective Chain Of Custody (COC):

- ❑ **Low-cost, robust and flexible field handheld device** – different configurations and communications options available.
- ❑ **Customisable front-end** – different fields for different data entry modes.
- ❑ **Centralised application version control** – updated automatically.
- ❑ **Synchronises with organisation’s Wood Policy** – start with critical nodes then roll-out to increase resolution, better understanding of processes and changes to the physical supply chain



## Effective Wood Origin Control (WOC):

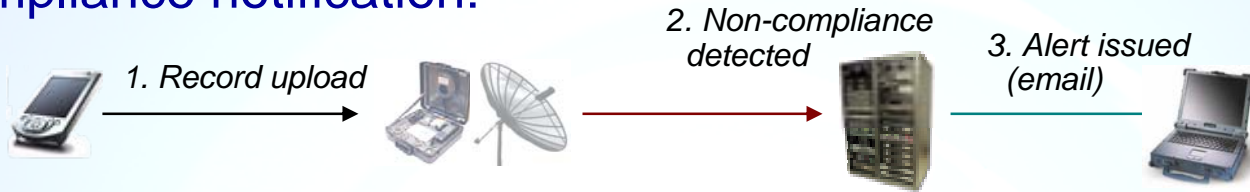
- ❑ **Tag-based system** pinpoints tree location and amount of wood
- ❑ Flexibility of hardware platform **enables additional data capture modes** in future – e.g. enhanced barcode and RFID tags
- ❑ **Timber entry differentiated from COC** through use of different form design and capture ‘mode’



## Internal Auditing System:

- ❑ **Compliance detection** – e.g. duplicate tags, tags out of order, species and volume changes.
- ❑ **Non-compliance prediction** through syndrome recognition – e.g. bulk entry of tags over small time period, systematic minor non-compliance activities.
- ❑ **Targeted alert notifications** based on compliance type:
  - ❑ All alerts to process controllers
  - ❑ Major or repeated non-compliances further up the supply chain
  - ❑ Selected alerts to suppliers
- ❑ **Web-based compliance reports** – supply chain ‘health checks’ provide appropriate personnel at-a-glance and drill-down status reports from entire supply chain.

## Compliance notification:



**Supply chains under TracElite Control**

Chain name	Start Node	End Node	Nodes	Status	Chain Reports
YS15	Yayasan Sabah FMU 15 (Malaysia)	Tran Duc (Vietnam)	4	● Compliance	Statistics   Configuration
YS14	Yayasan Sabah FMU 15 (Malaysia)	Tran Duc (Vietnam)	4	● Compliance	Statistics   Configuration
HK01	Hutanudu/Kanda (Indonesia)	PT Intertrans (Indonesia)	4	● Compliance	Statistics   Configuration
DS01	Daya Sekeloa Intiga (Indonesia)	PT Intertrans (Indonesia)	4	● Compliance	Statistics   Configuration
PT01	PT Dayu (Indonesia)	PT Temung Timbenodo Industry (Indonesia)	3	● Compliance	Statistics   Configuration
CI01	Comptel Industriale des Bois (Congo)	N/A	1	● Compliance	Statistics   Configuration

4. Log on, drill-down to view compliance reports

**Compliance report: YS15 - Clear All | Block All**

Chain name	Start Node	End Node	Nodes	Status	Chain Reports
YS15	Yayasan Sabah FMU 15 (Malaysia)	Tran Duc (Vietnam)	4	● Compliance	Statistics   Configuration

**Node 1: Yayasan Sabah FMU 15 (Mapping / Register Logs) - Clear All | Block All**

Non-compliance	Description	Tag / ID	Date	Status	Actions
NC007	Duplicate tag	56924	20/11/2004	●	Add note   Clear   Block
NC007	Duplicate tag	56925	20/11/2004	●	Add note   Clear   Block
NC007	Duplicate tag	56926	20/11/2004	●	Add note   Clear   Block
NC007	Duplicate tag	56927	20/11/2004	●	Add note   Clear   Block
NC007	Duplicate tag	56927	20/11/2004	●	Add note   Clear   Block
NC011	Species not entered	4478	17/06/2004	●	Add note   Clear   Block
NC005	Diameter out of range	4979	19/06/2004	●	Add note   Clear   Block
NC016	Species has changed (log registration)	36789	14/05/2004	●	Add note   Clear   Block
NC007	Duplicate tag (log registration)	25788	11/05/2004	●	Add note   Clear   Block

**Node 2: Kimanis Port (Track logs) - Clear All | Block All**

Non-compliance	Description	Tag / ID	Date	Status	Actions
NC016	Species change	11356	15/10/2004	●	Add note   Clear   Block
NC016	Species change	17567	15/10/2004	●	Add note   Clear   Block
NC017	Volume increase	15982	12/10/2004	●	Add note   Clear   Block
NC017	Volume increase	20633	11/10/2004	●	Add note   Clear   Block
NC007	Duplicate tag	19195	11/10/2004	●	Add note   Clear   Block
NC011	Species not entered	4478	17/06/2004	●	Add note   Clear   Block

**Node 3: Ho Chi Min Port (Track logs) - Clear All | Block All**

Non-compliance	Description	Tag / ID	Date	Status	Actions
NC017	Volume increase	8766	03/09/2004	●	Add note   Clear   Block
NC017	Volume increase	8767	03/09/2004	●	Add note   Clear   Block
NC017	Volume increase	8768	03/09/2004	●	Add note   Clear   Block
NC017	Volume increase	8769	03/09/2004	●	Add note   Clear   Block
NC007	Duplicate tag	7554	03/09/2004	●	Add note   Clear   Block
NC007	Duplicate tag	7145	03/09/2004	●	Add note   Clear   Block



## Third-party auditing:

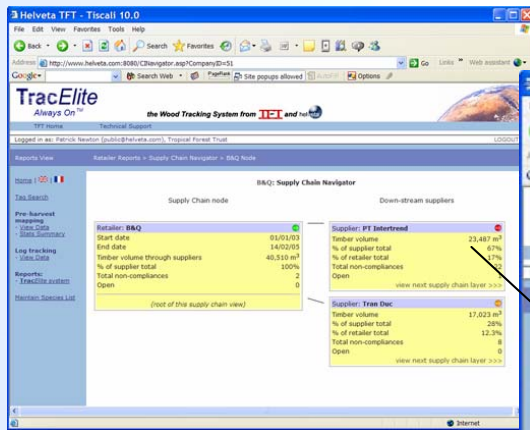
- Third-party verification** – performed through same web interface.
- Access to partial or entire supply chain** e.g. retailer or supplier specific
- No alerts** – but ability to view audit trail, non-compliance reports.
- Benefits for third-party auditors:**
  - Full-time compliance monitoring reduces the need for spot checks.
  - Replacement of yearly auditing reports with on-demand snapshots of supply chain status
  - Ability to prioritise areas of concerns for ‘smarter’ site visits, etc.

## Stakeholder reporting:

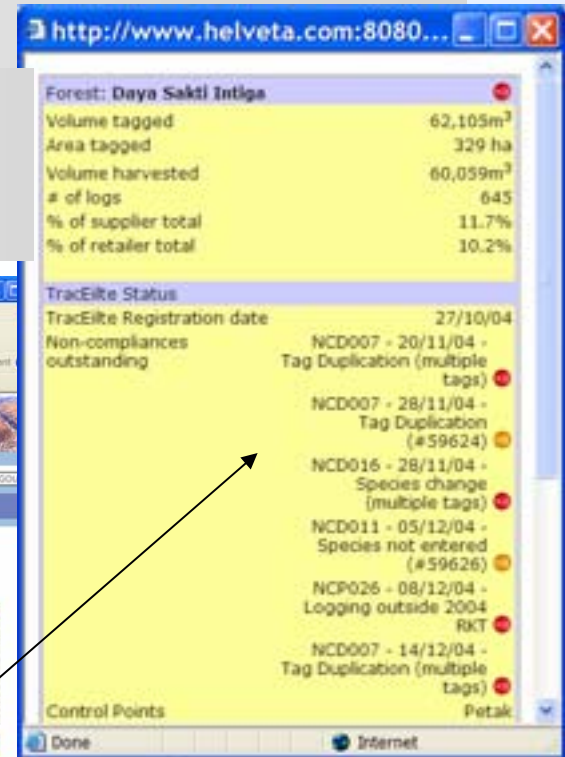
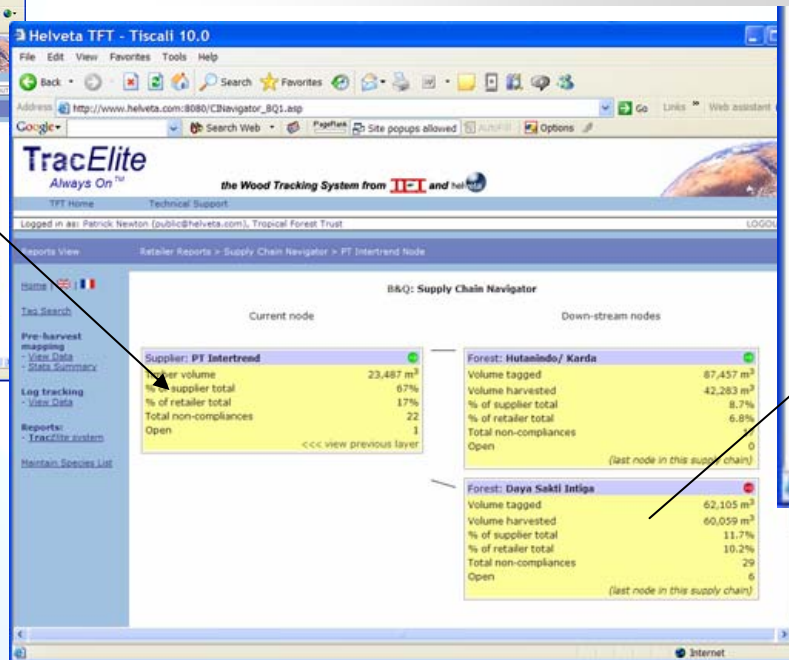
- Access to information and reports** – restricted based on user type
- Reports available for traditional auditing periods** (e.g. quarterly or year-end)
- Range of reports**, e.g. user-friendly generation of both current and historical supply chain structure and status

## Non-compliance reporting and traceability through *TracElite*:

*...leads to individual suppliers and current non-compliance issues outstanding.*



*Top-level supply-chain monitoring...*



## TFT CIView Tools – Responding to non-compliances (audit trail)

Response to non-compliances

The screenshot shows a web browser window with a 'Non-compliance notes - Tiscali 10.0' window open. The notes window contains the following information:

- Non-compliance:** Yayasan Sabah (FMU15)
- Non-compliance:** NCD007 - 28/11/04 - Tag Duplication (#1196)
- TFT Contact:** Hugh Blackett, Regional Coordinator SE Asia, Tropical Forest Trust, 15 Lorong Buloh Perindu 5, 59000 Kuala Lumpur, Malaysia. Tel: +60 3 2094 4630, h.blackett@tropicalforesttrust.com
- Last update:** 17/01/05
- TracElite Status:** Notes to date: Non-compliance detected 28/11/04
- Add additional notes:** Hugh Blackett: contacted Yayasan, some problems reported with the way tags were

The main browser window shows a table of non-compliance records:

Date	Status	Actions
20/11/2004	Yellow circle	Add note   Clear   Block
20/11/2004	Yellow circle	Add note   Clear   Block
20/11/2004	Yellow circle	Add note   Clear   Block
20/11/2004	Yellow circle	Add note   Clear   Block
20/11/2004	Yellow circle	Add note   Clear   Block
17/06/2004	Green circle	Add note   Clear   Block
19/06/2004	Green circle	Add note   Clear   Block
14/05/2004	Yellow circle	Add note   Clear   Block
11/05/2004	Red circle	Add note   Clear   Block

## TFT CIView Tools – transaction report generation

**TracElite**  
Always On™

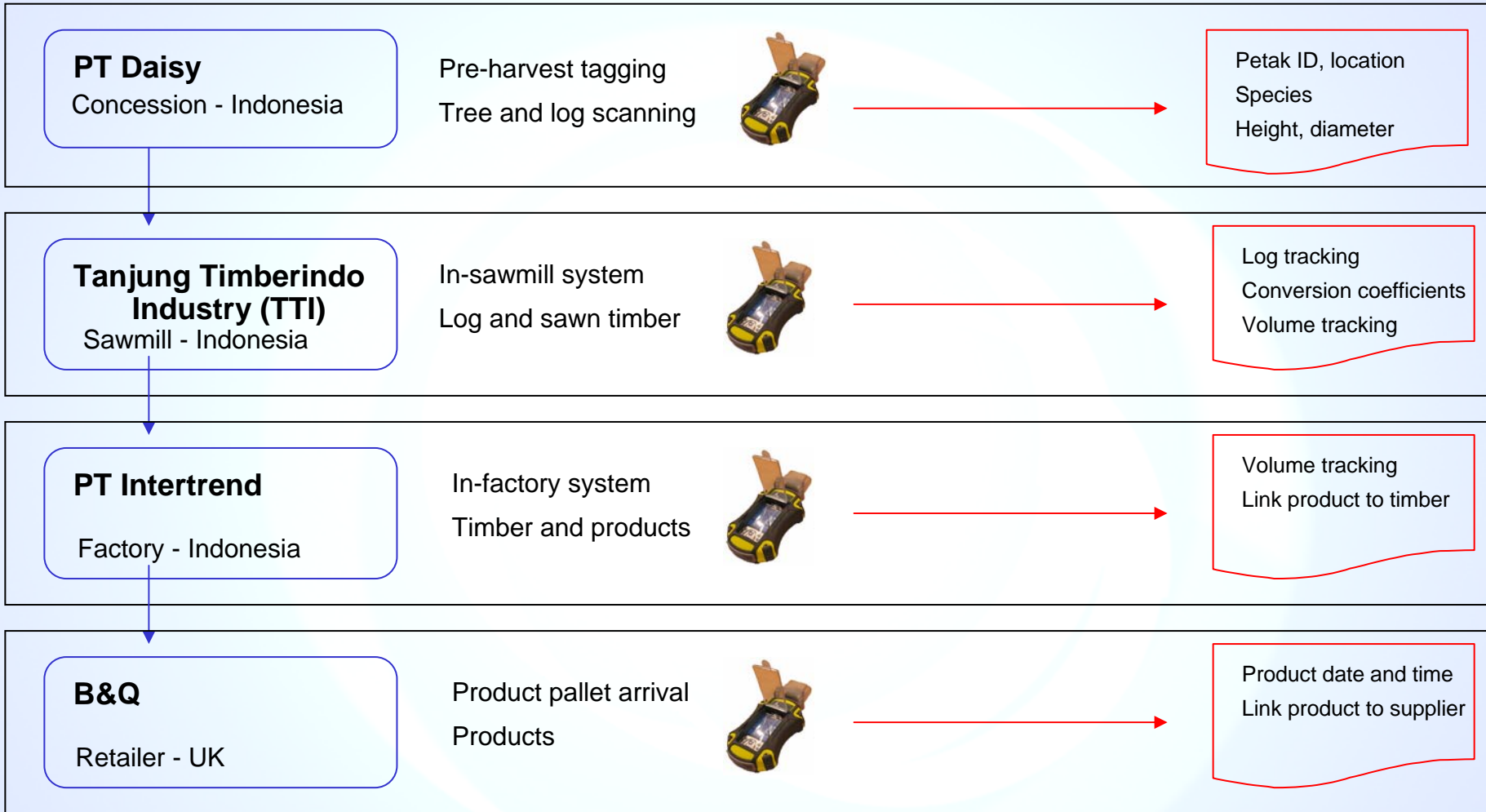
### DHH Log List – Hutanindo / Karda Patek Landing

Log List for **Hutanindo / Karda** at **Patek Landing**

Report generated by the TracElite system at 27/01/05 for user **Hugh Blackett**

<i>Tag ID</i>	<i>Log length (m)</i>	<i>Diameter (cm)</i>	<i>Species</i>	<i>Notes</i>
1100	4	30	BELAU	
1101	4.3	79	BELAU	
1102	5	56	BELAU	
1103	3	78	BELAU	
1114	5	59	MEDANG	
1115	4.8	64	KELEDANG	
1116	5	60	MERAWAN	
1117	3.7	59	MERAWAN	
1118	4.5	63	MERAWAN	
1119	4.8	60	KERANJI	
1120	5	68	MERAWAN	
1121	5.1	73	MERAWAN	
1122	2.9	70	MERAWAN	
1123	3.5	60	MEDANG	
1124	6	67	MEDANG	
1125	5.5	63	NYATOH	
1126	4.9	61	MERAWAN	
1127	4.7	60	MERAWAN	

**Log list  
(front page of DHH)**



## Arrival from harbour via truck:

- Logs scanned at harbour
- Logs scanned upon unloading
- Segregation occurs (Certified / non-certified)



## Segregation at unloading





## Post sawmill

- Batch reconciliation of wet sawn timber and components
- Kiln Dry Process



## Components and timber storage



## Pre-assembly process

- ❑ Segregation
- ❑ FSC = yellow flag (ticket)



## Assembly / Packing



## Assembly / Packing



## Finished products



## Finished products

- ❑ B&Q Number attached
- ❑ TracElite system now has complete record

